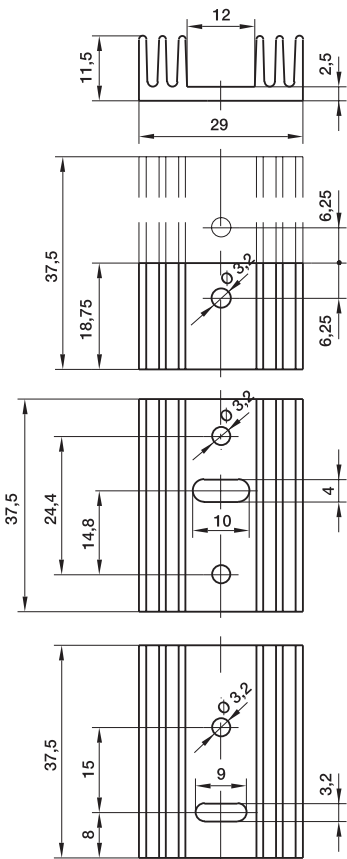
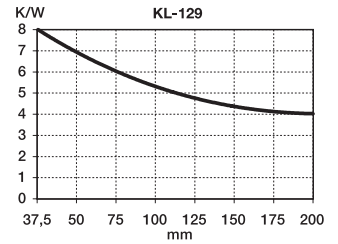


## Profilkühlkörper | Extruded heat sinks



KL-129



TO-220

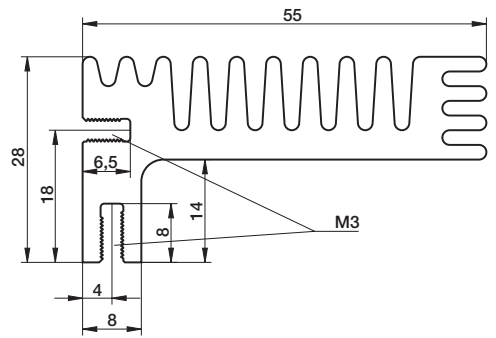
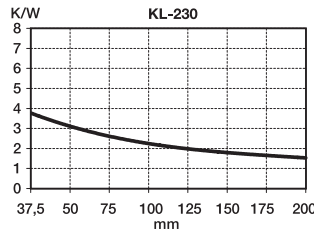
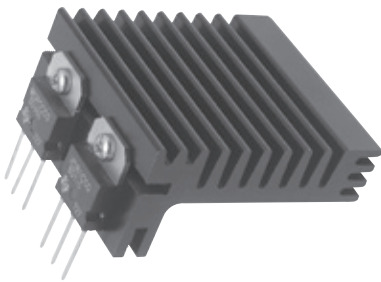
TO-220  
SOT-32

TO-32

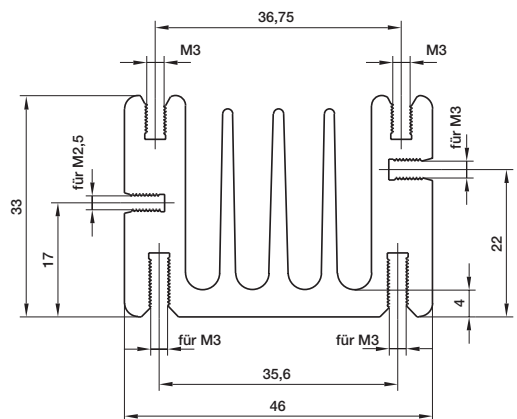
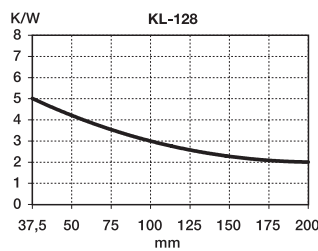
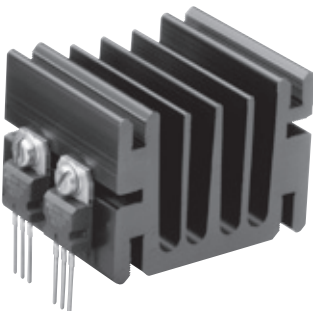
Typ Type	Artikel-Nr. Part no.	Länge in Length mm	Oberfläche Surface finish	Lochbild Hole pattern
KL-129/18,75/220/m	1290800	18,75	m	TO-220
KL-129/37,5/220/m	1290100	37,5	m	TO-220
KL-129/37,5/32/sw	1290131	37,5	sw	TO-32
KL-129/37,5/32/220/sw	1290151	37,5	sw	TO-32/220

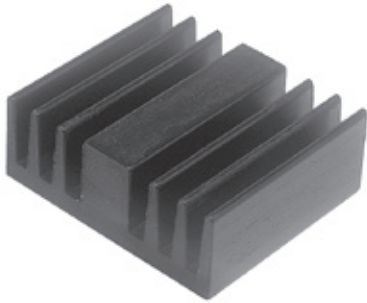
m: Naturfarben/Plain  
sw: Schwarz eloxiert/Black anodized

KL-230

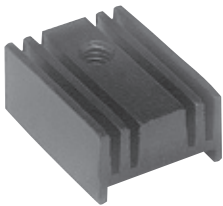
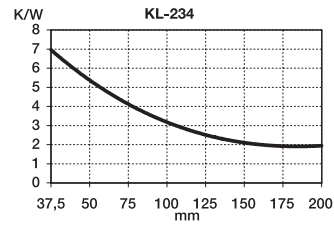
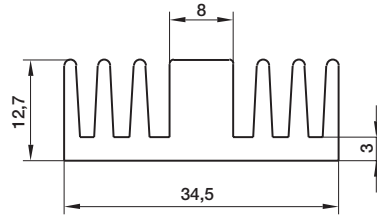


KL-128

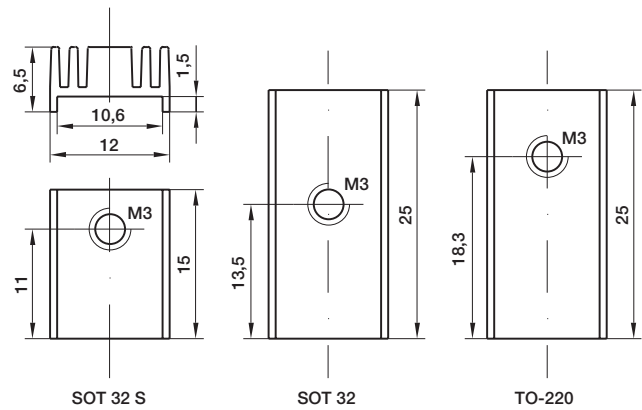




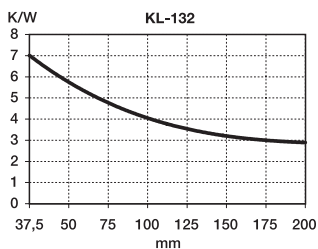
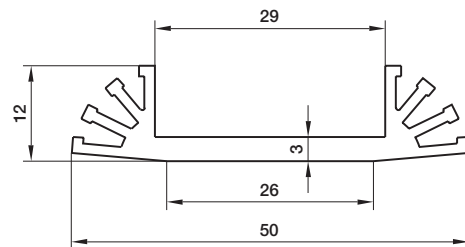
KL-234  
TO-220  
TOP-3



KL-235



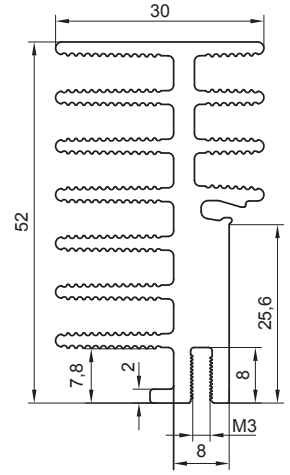
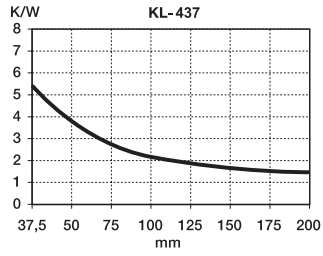
KL-132



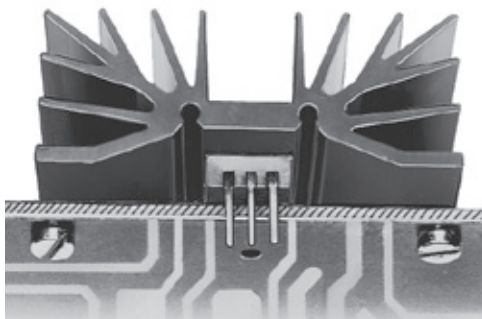
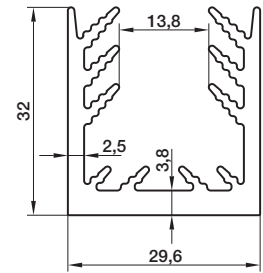
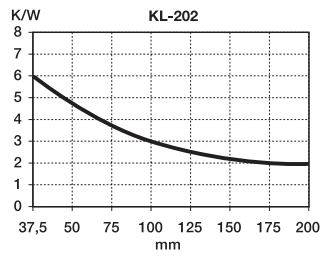
Typ Type	Artikel-Nr. Part no.	Länge in Length mm	Oberfläche Surface finish	Lochbild Hole pattern	Thermischer Widerstand Thermal resistance
KL-235/15/SOT 32/sw	2350741	15	sw	SOT 32	38,5
KL-235/25/TO-220/sw	2350811	25	sw	TO-220	36
KL-235/25/SOT 32/sw	2350841	25	sw	SOT 32	36
KL-132/37,5/3/sw	1320111	37,5	sw	TO-3	
KL-132/37,5/3/9/32/66/sw	1320131	37,5	sw	TO-3/9/32/66	

sw: Schwarz eloxiert/Black anodized

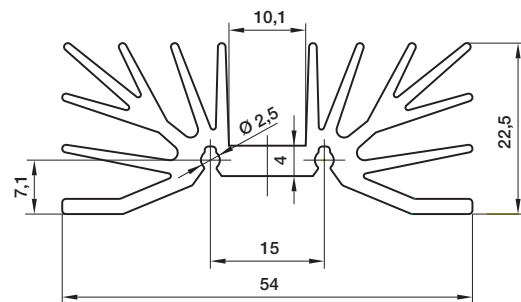
KL-437



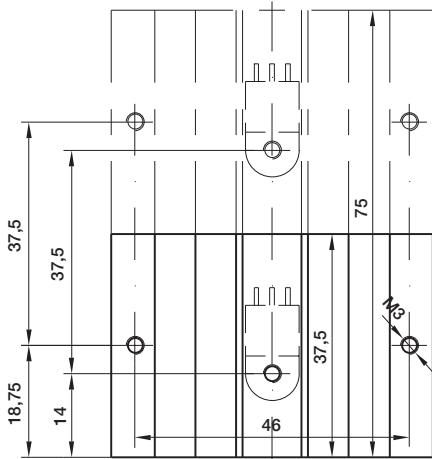
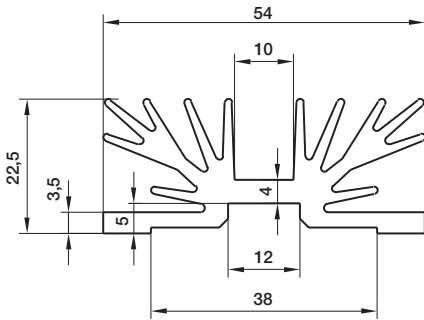
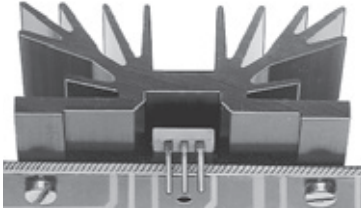
KL-202



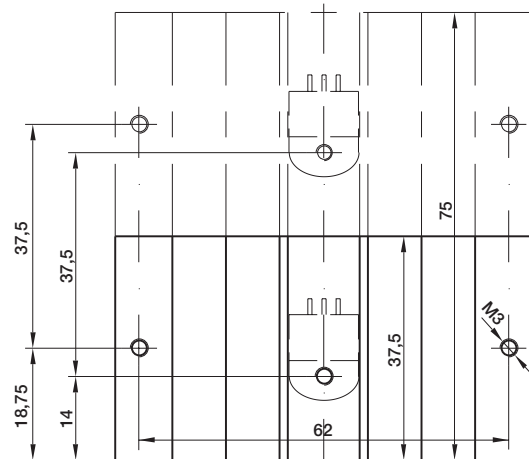
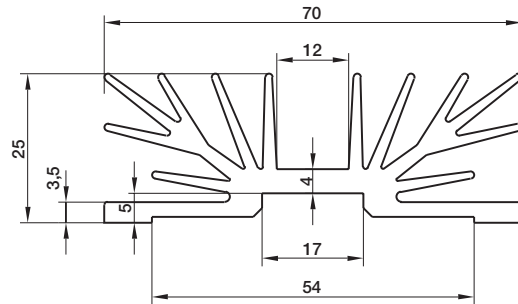
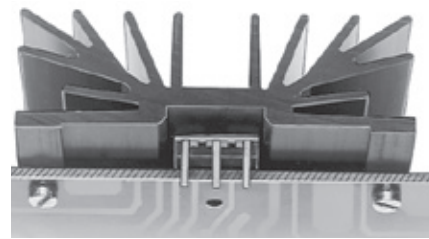
KL-208



KL-108



KL-107



Typ Type	Artikel-Nr. Part no.	Länge in Length mm	Oberfläche Surface finish	Lochbild Hole pattern	Thermischer Widerstand Thermal resistance
KL-108/37,5/sw	1080151	37,5	sw	1xM3	5,7
KL-108/75/sw	1080351	75	sw	2xM3	3,8
KL-107/37,5/sw	1070151	37,5	sw	1xM3	4,3
KL-107/75/sw	1070351	75	sw	2xM3	2,9
KL-208/37,5/sw	2080151	37,5	sw	1xM3	5,7
KL-208/75/sw	2080351	75	sw	2xM3	3,8

sw: Schwarz eloxiert/Black anodized