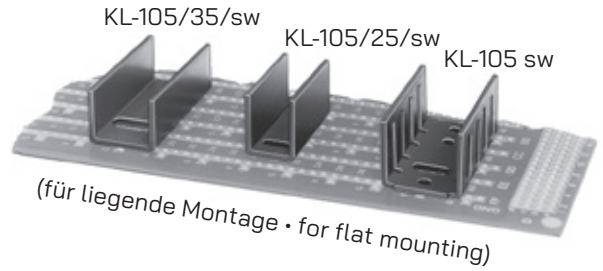
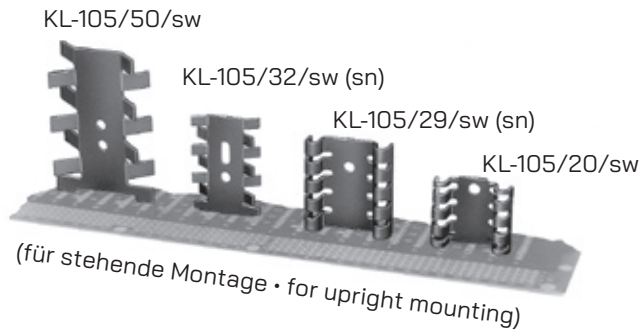


Finger- und U-Kühlkörper | Finned- and U-heatsinks

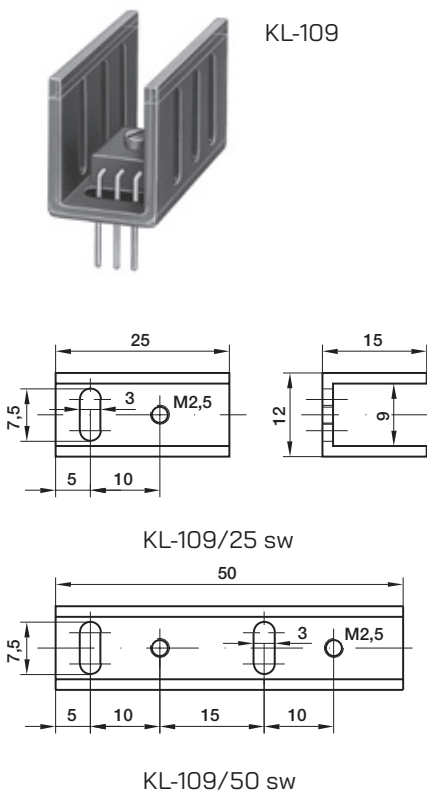


Gefertigt aus Al 99, Oberfläche schwarz eloxiert, geeignet für liegende bzw. stehende Montage von Plastiktransistoren im TO-220 Gehäuse. Die Verrippungen in den Längsseiten der Kühlkörper ergeben bei jeder Einbaulage immer optimale thermische Werte. Die Typen KL-105/29/sn, KL-105/32/sn, KL-164/sn, KL-165/sn, KL-168/sn und KL-169/sn sind verzinkt und gut lötlbar.

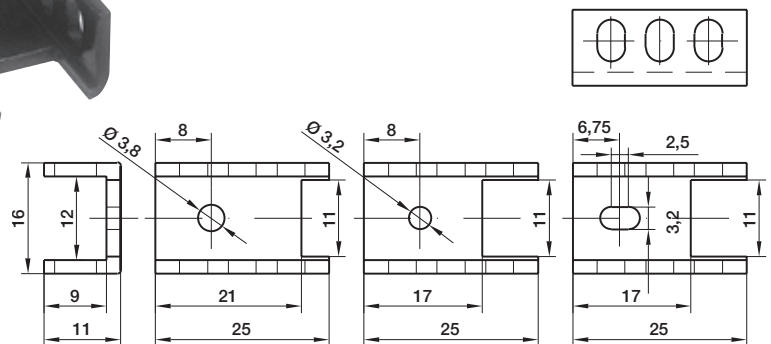
Manufactured from Al 99 and black anodized, suitable for horizontal or vertical mounting of TO-220 plastic transistors. The ribbing in the sides of the heat sinks ensures optimum thermal values in any position. Types KL-105/29/sn, KL-105/32/sn, KL-164/sn, KL-165/sn, KL-168/sn and KL-169/sn are tinned and easily solderable.

Typ Type	Artikel-Nr. Part no.	Länge in Length mm	Abmessung Dimension A	Material	Oberfläche Surface finish	Thermischer Widerstand Thermal resistance (K/W)
KL-105/sw	1050341	35		Al 99,5	sw	15
KL-105/25/sw	1051041	25	M 2,5	Al 99,5	sw	22
KL-105/25/3,2/sw	1051141	25	3,2	Al 99,5	sw	22
KL-105/35/sw	1052041	35	M 3	Al 99,5	sw	21
KL-105/35/3,2/sw	1052141	35	3,2	Al 99,5	sw	21
KL-105/20/sw	1050141	20		Al 99,5	sw	21
KL-105/29/sw	1050241	29		Al 99,5	sw	19
KL-105/29/sn	1050243	29		Al 99,5	sn	20,2
KL-105/32/sw	1050841	32		Al 99,5	sw	20,2
KL-105/32/sn	1050843	32		Al 99,5	sn	21

sn: Verzinkt/Tinned
sw: Schwarz eloxiert/Black anodized



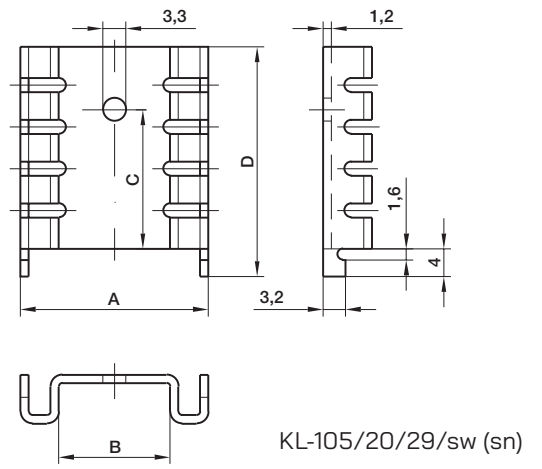
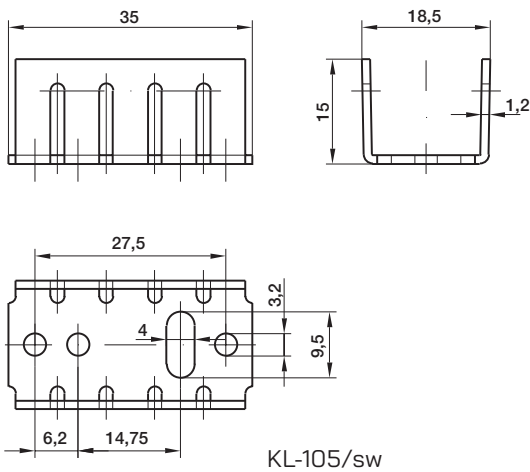
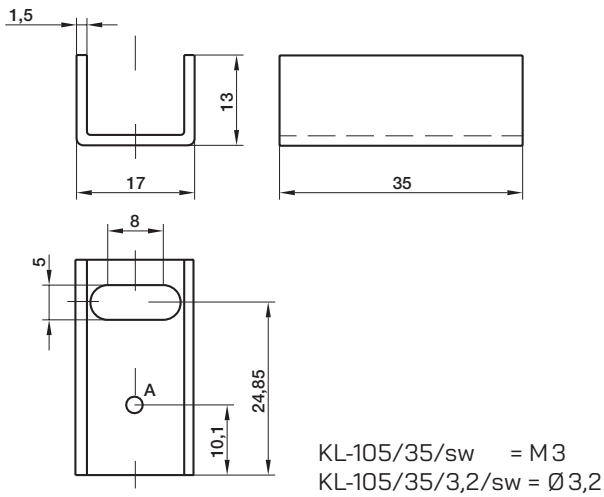
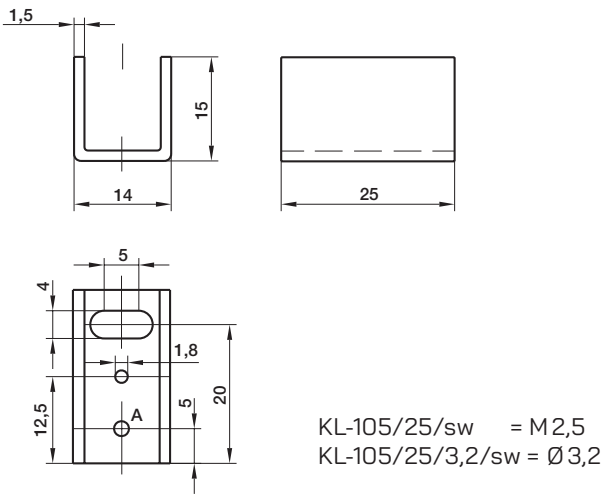
KL-112/25/
A/B/C/sw



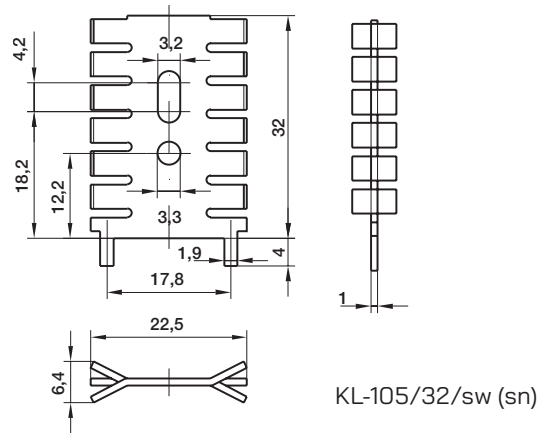
KL-112/25/a/sw KL-112/25/b/sw KL-112/25/c/sw

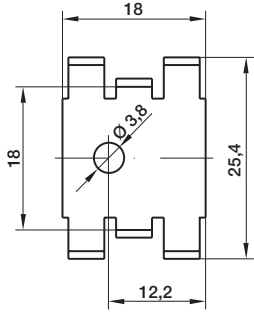
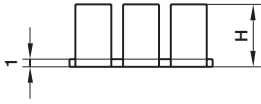
Typ Type	Artikel-Nr. Part no.	Länge in Length mm	Material	Oberfläche Surface finish	Thermischer Widerstand Thermal resistance (K/W)
KL-109/25/sw	1090841	25	Al 99,5	sw	25,5
KL-109/50/sw	1090241	50	Al 99,5	sw	12,8
KL-109/1000/m	1090900	1000	Al 99,5	m	
KL-109/1000/sw	1090901	1000	Al 99,5	sw	
KL-112/25/a/sw	1120100	25	Al 99,5	sw	18
KL-112/25/b/sw	1120110	25	Al 99,5	sw	18
KL-112/25/c/sw	1120150	25	Al 99,5	sw	18

m: Naturfarben/Plain
sw: Schwarz eloxiert/Black anodized



Typ	A	B	C	D
KL-105/20/sw	24	13	17	24
KL-105/29/sw(sn)	27	16	20,5	33

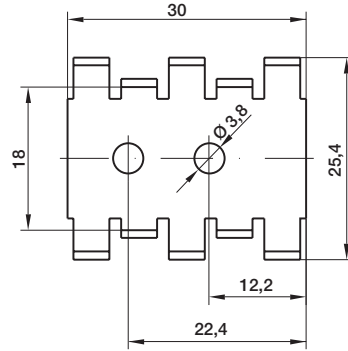
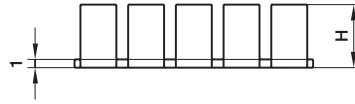




KL-162 + 166



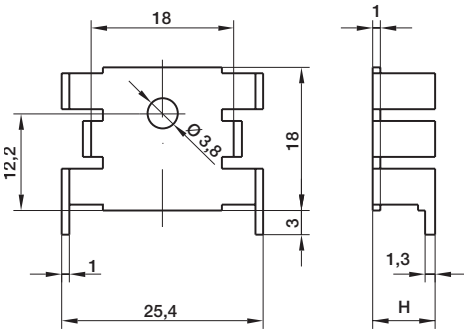
KL-166



KL-163 + 167



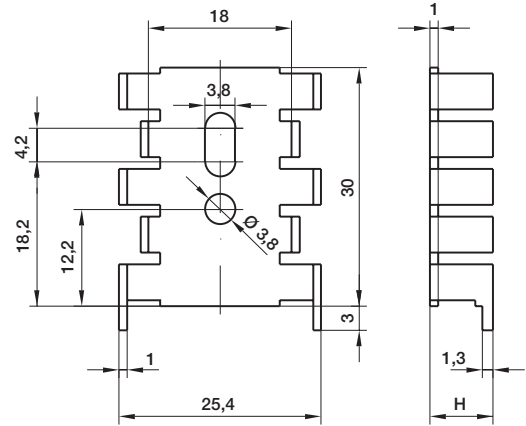
KL-167



KL-164 + 168



KL-168



KL-165 + 169

KL-169



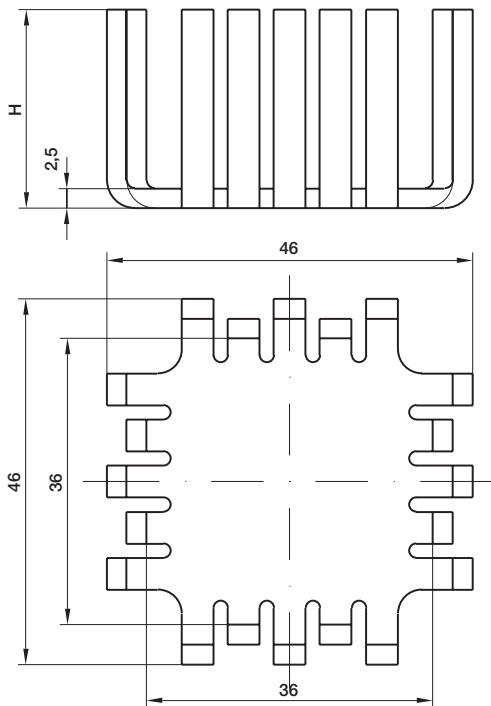
Typ Type	Artikel-Nr. Part no.	Material	Oberfläche Surface finish	Abmessung Dimension H	Thermischer Widerstand Thermal resistance (K/W)
KL-162/sw	1620041	Al 99,5	sw	7,9	25
KL-163/sw	1630041	Al 99,5	sw	7,9	18
KL-164/sw	1640041	Al 99,5	sw	7,9	24
KL-164/sn	1640044	Al 99,5	sn	7,9	25
KL-165/sw	1650041	Al 99,5	sw	7,9	18
KL-165/sn	1650044	Al 99,5	sw	7,9	19
KL-166/sw	1660041	Al 99,5	sw	12,7	21
KL-167/sw	1670041	Al 99,5	sw	12,7	15
KL-168/sw	1680041	Al 99,5	sw	12,7	20
KL-168/sn	1680044	Al 99,5	sn	12,7	21
KL-169/sw	1690041	Al 99,5	sw	12,7	15
KL-169/sn	1690044	Al 99,5	sn	12,7	16

sn: Verzinkt/Tinned
sw: Schwarz eloxiert/Black anodized

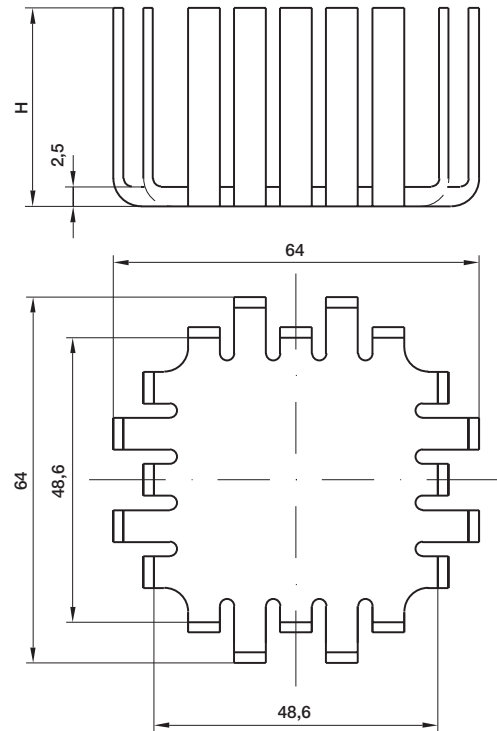
KL-151



KL-151



KL-152 + 153

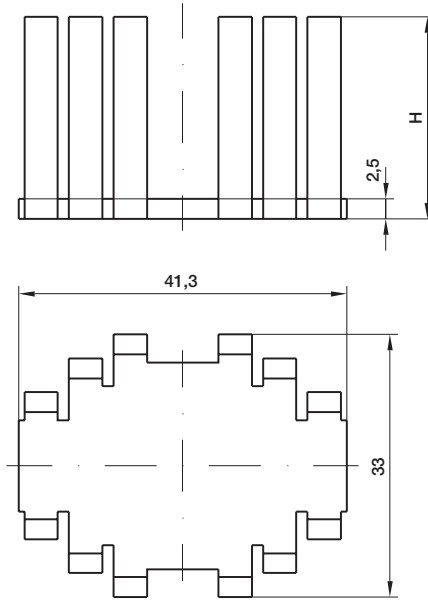


Typ Type	Artikel-Nr. Part no.	Material	Oberfläche Surface finish	Lochbild Hole pattern	Abmessung Dimension H	Thermischer Widerstand Thermal resistance (K/W)
KL-151/3/sw	1510011	Al 99,5	sw	TO-3	25,4	6
KL-151/3/9/32/66/sw	1510031	Al 99,5	sw	TO-3/9/32/66	25,4	6
KL-152/3/sw	1520011	Al 99,5	sw	TO-3	23	4,3
KL-152/3/9/32/66/sw	1520031	Al 99,5	sw	TO-3/9/32/66	23	4,3
KL-153/3/sw	1530011	Al 99,5	sw	TO-3	32	3,2
KL-153/3/9/32/66/sw	1530031	Al 99,5	sw	TO-3/9/32/66	32	3,2

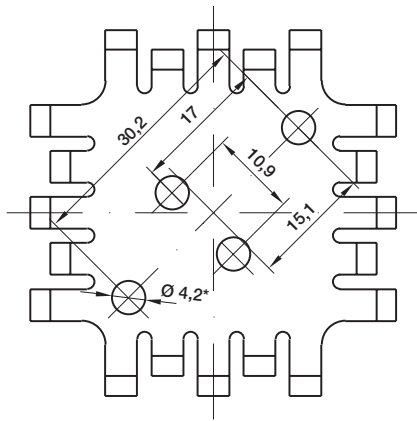
sw: Schwarz eloxiert/Black anodized



KL-157

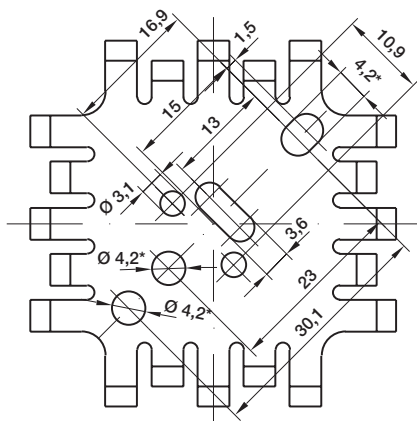


KL-155-158



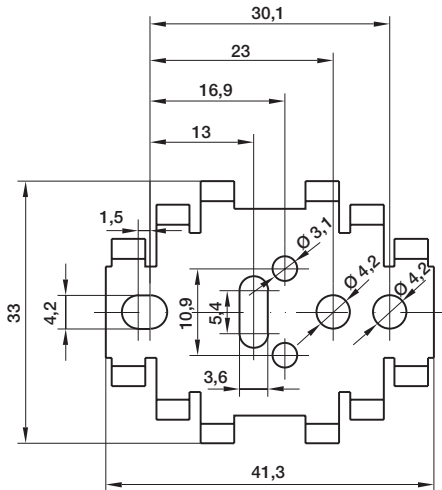
TO-3

- Serienmäßige Lochstellung
- Standard hole positions



TO-3/9/32/66

*KL-152 + 153: Ø 5



Typ Type	Artikel-Nr. Part no.	Material	Oberfläche Surface finish	Lochbild Hole pattern	Abmessung Dimension H	Thermischer Widerstand Thermal resistance (K/W)
KL-155/3/9/32/66/sw	1550031	Al 99,5	sw	TO-3/9/32/66	12,7	14
KL-156/3/9/32/66/sw	1560031	Al 99,5	sw	TO-3/9/32/66	19,1	12
KL-157/3/9/32/66/sw	1570031	Al 99,5	sw	TO-3/9/32/66	25,4	10,5
KL-158/3/9/32/66/sw	1580031	Al 99,5	sw	TO-3/9/32/66	31,8	9

sw: Schwarz eloxiert/Black anodized