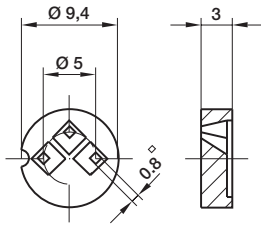
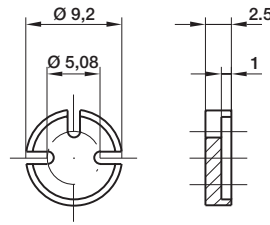
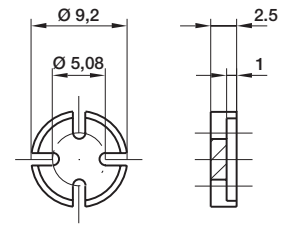
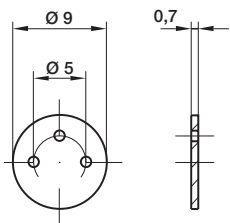
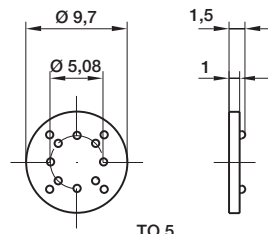
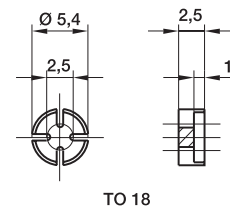
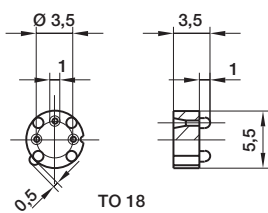
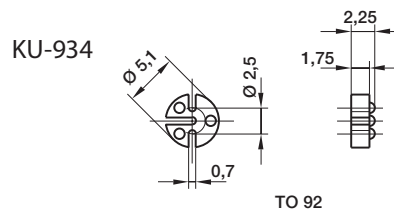


## Montage- und Umsetzerscheiben | Mounting and conversion pads

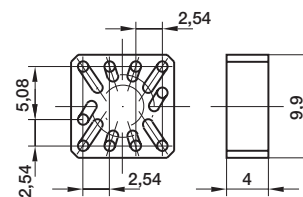
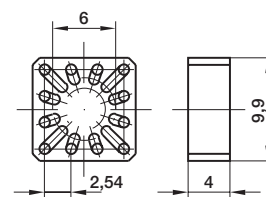
### Montagescheiben • Mounting pads


 TO 5  
KU-921

 TO 5  
KU-923

 TO 5  
KU-924

 TO 5  
KU-926

 TO 5  
KU-970/8

 TO 18  
KU-931

 TO 18  
KU-932


TO 92

Typ Type	Artikel-Nr. Part no.
KU-921	9210000
KU-923	9230000
KU-924	9240000
KU-926	9260000
KU-931	9310000
KU-932	9320000
KU-934	9340000
KU-960/10	9601000
KU-960/12	9601200
KU-970/8	9700800

### Umsetzerscheiben • Conversion pads


 TO 5  
KU-960/10

 TO 5  
KU-960/12

#### Technische Daten

Material	PCT CG 923
Flammparkeit	selbstverlöschend nach UL 94 V-0
Temperaturbereich	-65°C bis +290°C

#### Technical data

Material	PCT CG 923
Flammability	self-extinguishing acc. to UL 94 V-0
Temperature range	-65°C to +290°C